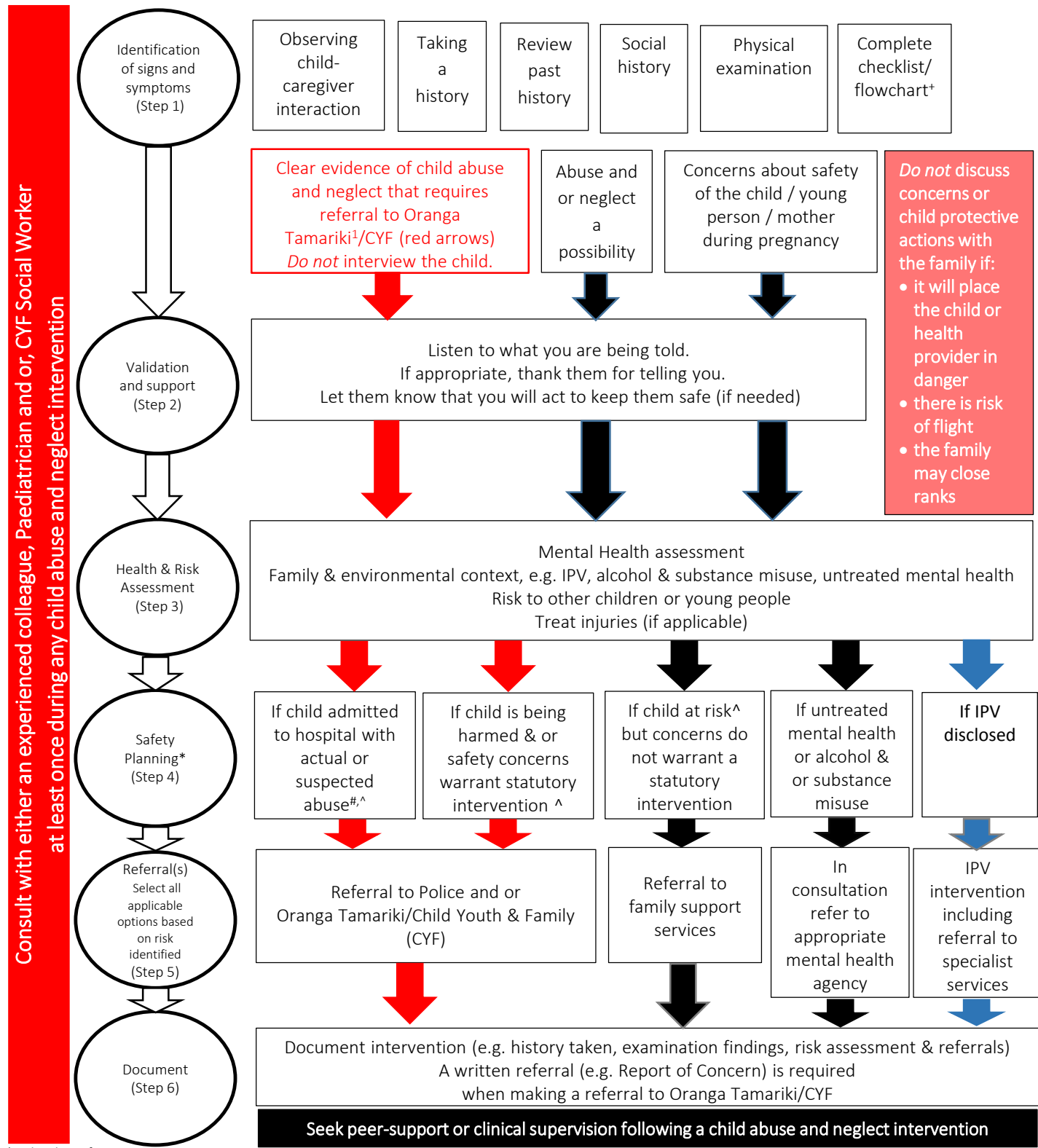


Patient presents to health professional complete initial clinical assessment



Consult with either an experienced colleague, Paediatrician and/or, CYF Social Worker at least once during any child abuse and neglect intervention

Observing child-caregiver interaction Taking a history Review past history Social history Physical examination Complete checklist/flowchart*

Clear evidence of child abuse and neglect that requires referral to Oranga Tamariki¹/CYF (red arrows) Do not interview the child.

Abuse and or neglect a possibility

Concerns about safety of the child / young person / mother during pregnancy

Do not discuss concerns or child protective actions with the family if:

- it will place the child or health provider in danger
- there is risk of flight
- the family may close ranks

Listen to what you are being told.
If appropriate, thank them for telling you.
Let them know that you will act to keep them safe (if needed)

Mental Health assessment
Family & environmental context, e.g. IPV, alcohol & substance misuse, untreated mental health
Risk to other children or young people
Treat injuries (if applicable)

If child admitted to hospital with actual or suspected abuse^{#,^}

If child is being harmed & or safety concerns warrant statutory intervention ^

If child at risk[^] but concerns do not warrant a statutory intervention

If untreated mental health or alcohol & or substance misuse

If IPV disclosed

Referral to Police and or Oranga Tamariki/Child Youth & Family (CYF)

Referral to family support services

In consultation refer to appropriate mental health agency

IPV intervention including referral to specialist services

Document intervention (e.g. history taken, examination findings, risk assessment & referrals)
A written referral (e.g. Report of Concern) is required when making a referral to Oranga Tamariki/CYF

Seek peer-support or clinical supervision following a child abuse and neglect intervention

*Red pathway for statutory intervention

*Black pathway for non-statutory intervention

*Blue pathway specialist service, e.g. FV, MHAS

* Tool for use in Emergency Departments for child up to 2 years age

Standard interagency protocol, Memorandum of Understanding between DHB, CYF and Police and associated schedule 1

^consult with experienced colleague and or multidisciplinary team prior to a referral

¹Ministry for Vulnerable Children, Oranga Tamariki (Oranga Tamariki) formerly known as Child Youth and Family